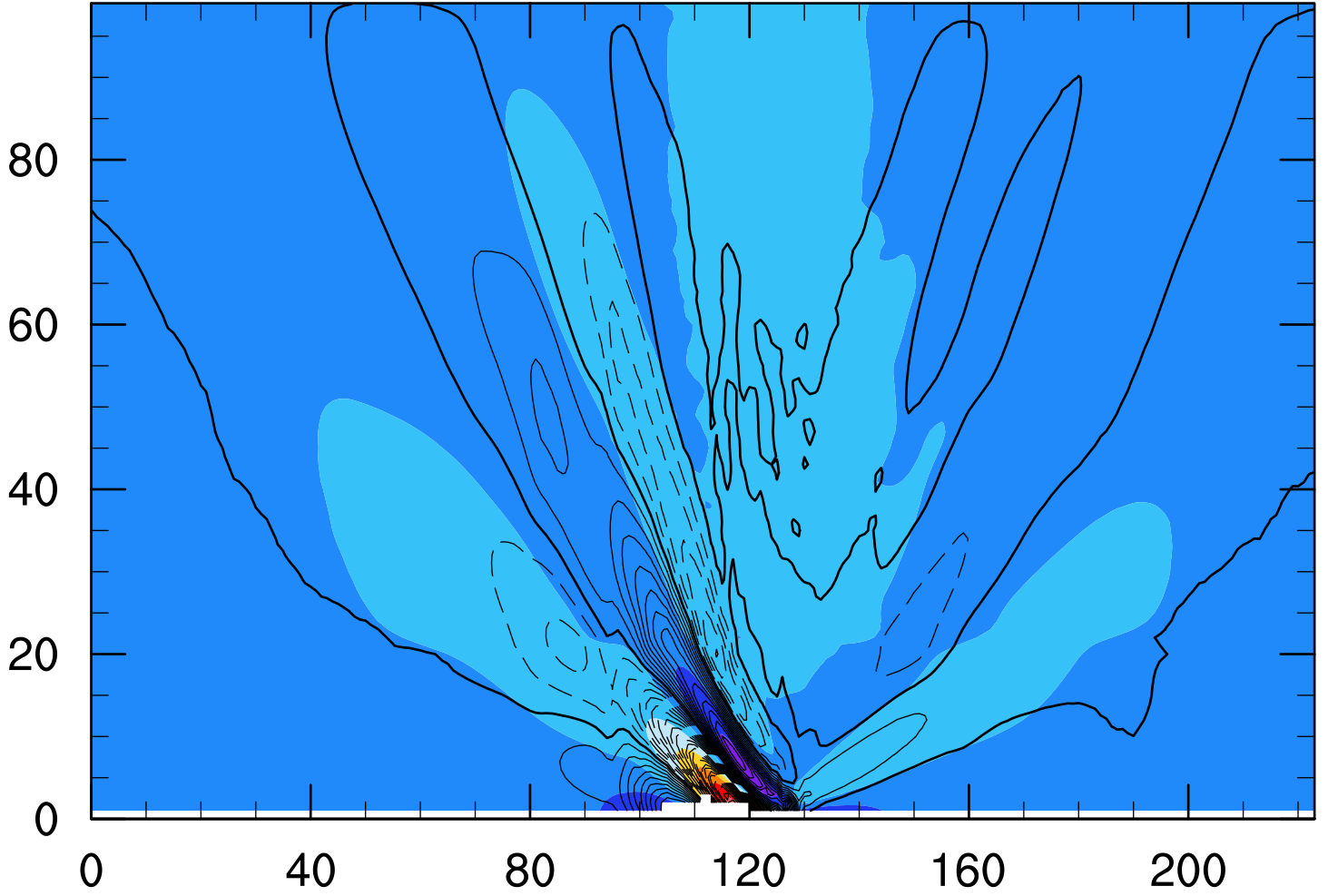


WRF Hill 3D

Valid: 0001-01-01_02:00:00

x-wind component
z-wind component (m s-1)

Cross-Section: (1,51) to (224,51) ; center=(0,50) ; angle=90



z-wind component Contours: -.23 to .12 by .01

x-wind component



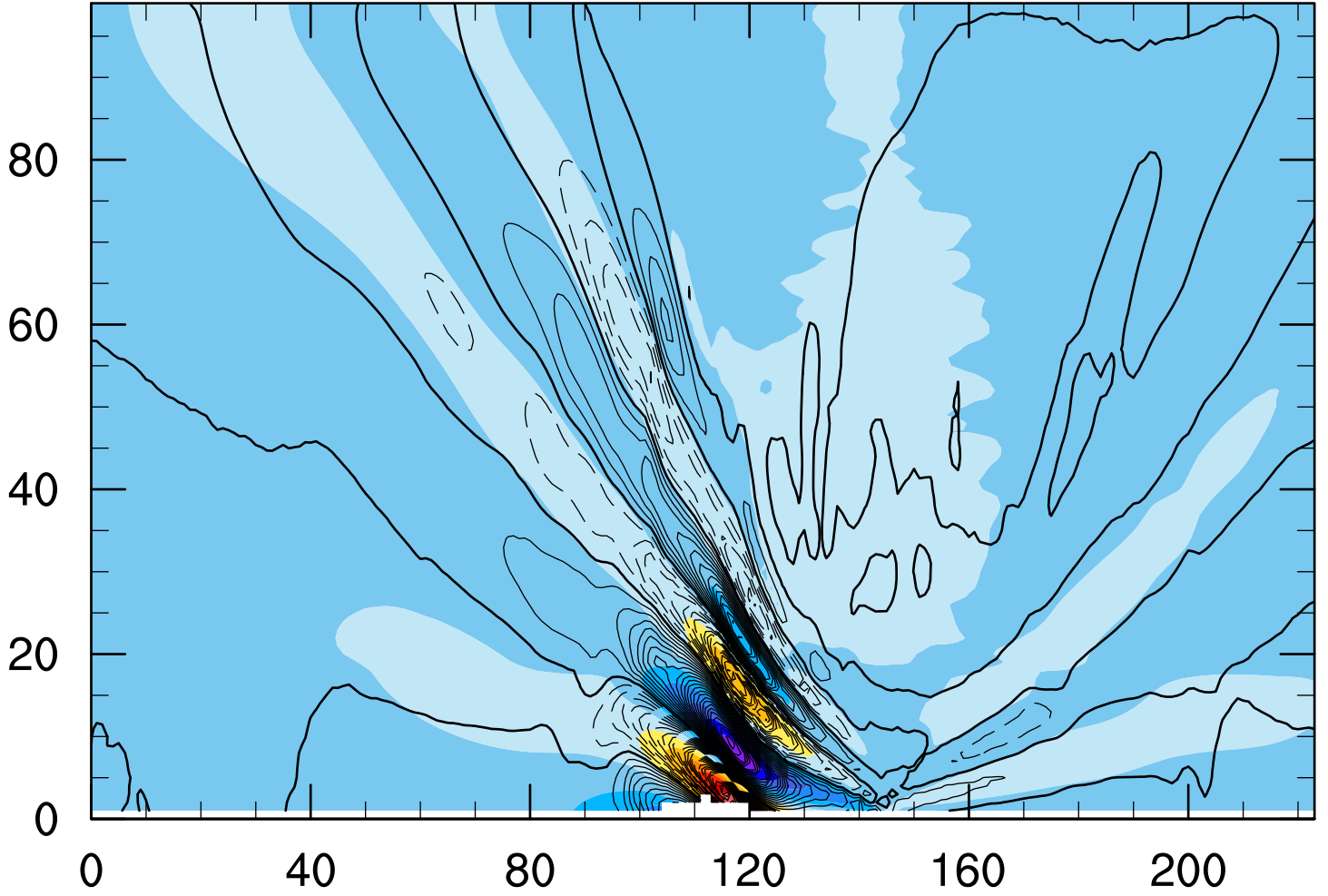
-2 -1 0 1 2 3 4 5

WRF Hill 3D

Valid: 0001-01-01_04:00:00

x-wind component
z-wind component (m s-1)

Cross-Section: (1,51) to (224,51) ; center=(0,50) ; angle=90



z-wind component Contours: -.26 to .23 by .01

x-wind component



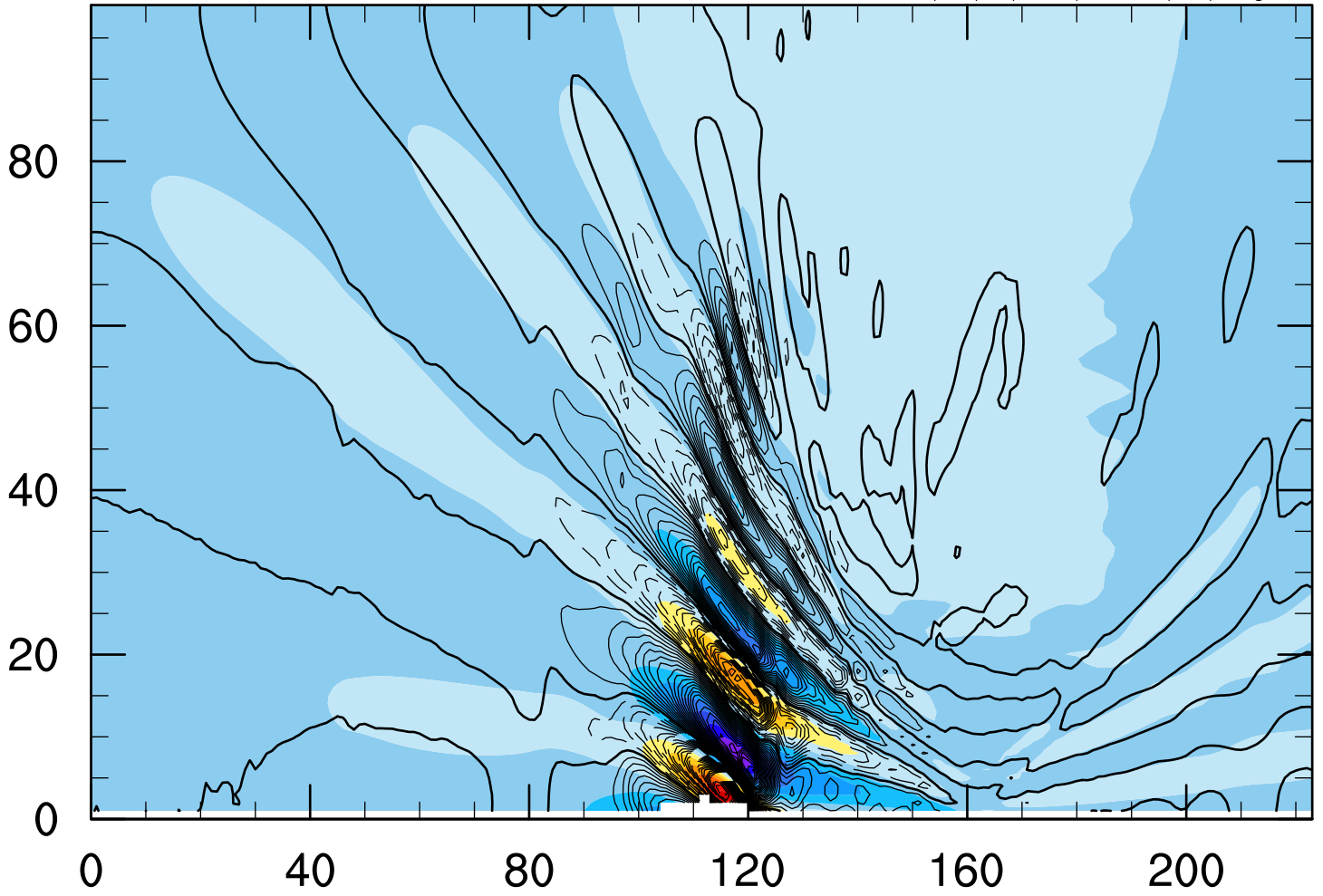
-5 -4 -3 -2 -1 0 1 2 3 4 5 6

WRF Hill 3D

Valid: 0001-01-01_06:00:00

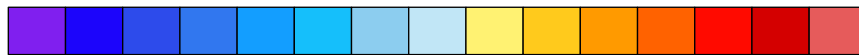
x-wind component
z-wind component (m s-1)

Cross-Section: (1,51) to (224,51) ; center=(0,50) ; angle=90



z-wind component Contours: -.29 to .25 by .01

x-wind component



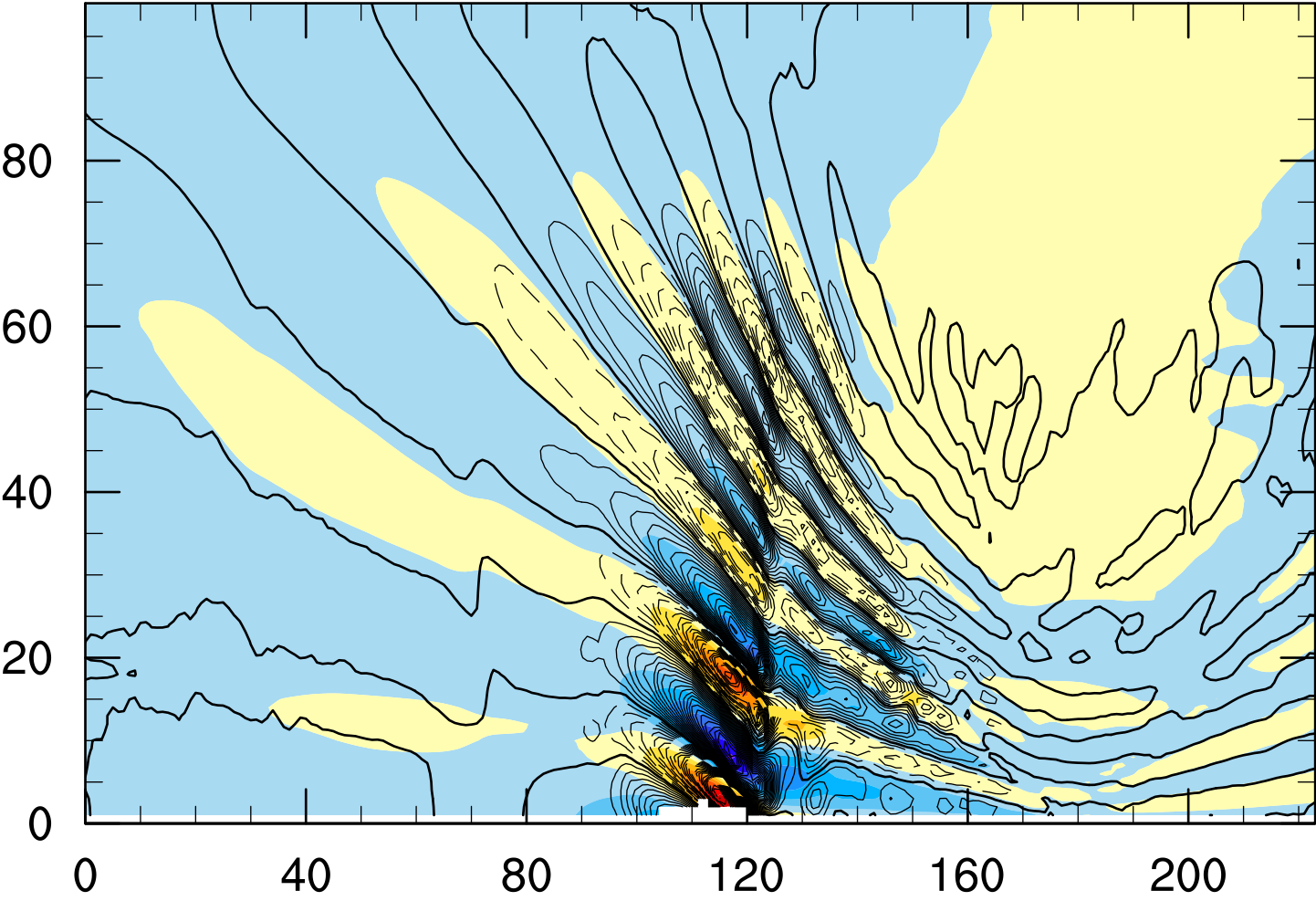
-6 -5 -4 -3 -2 -1 0 1 2 3 4 5 6 7

WRF Hill 3D

Valid: 0001-01-01_08:00:00

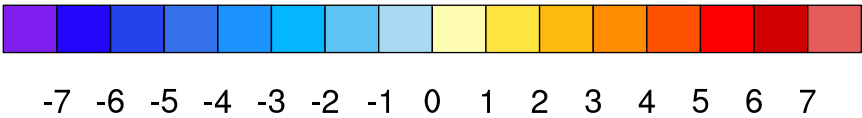
x-wind component
z-wind component (m s-1)

Cross-Section: (1,51) to (224,51) ; center=(0,50) ; angle=90



z-wind component Contours: -.28 to .22 by .01

x-wind component

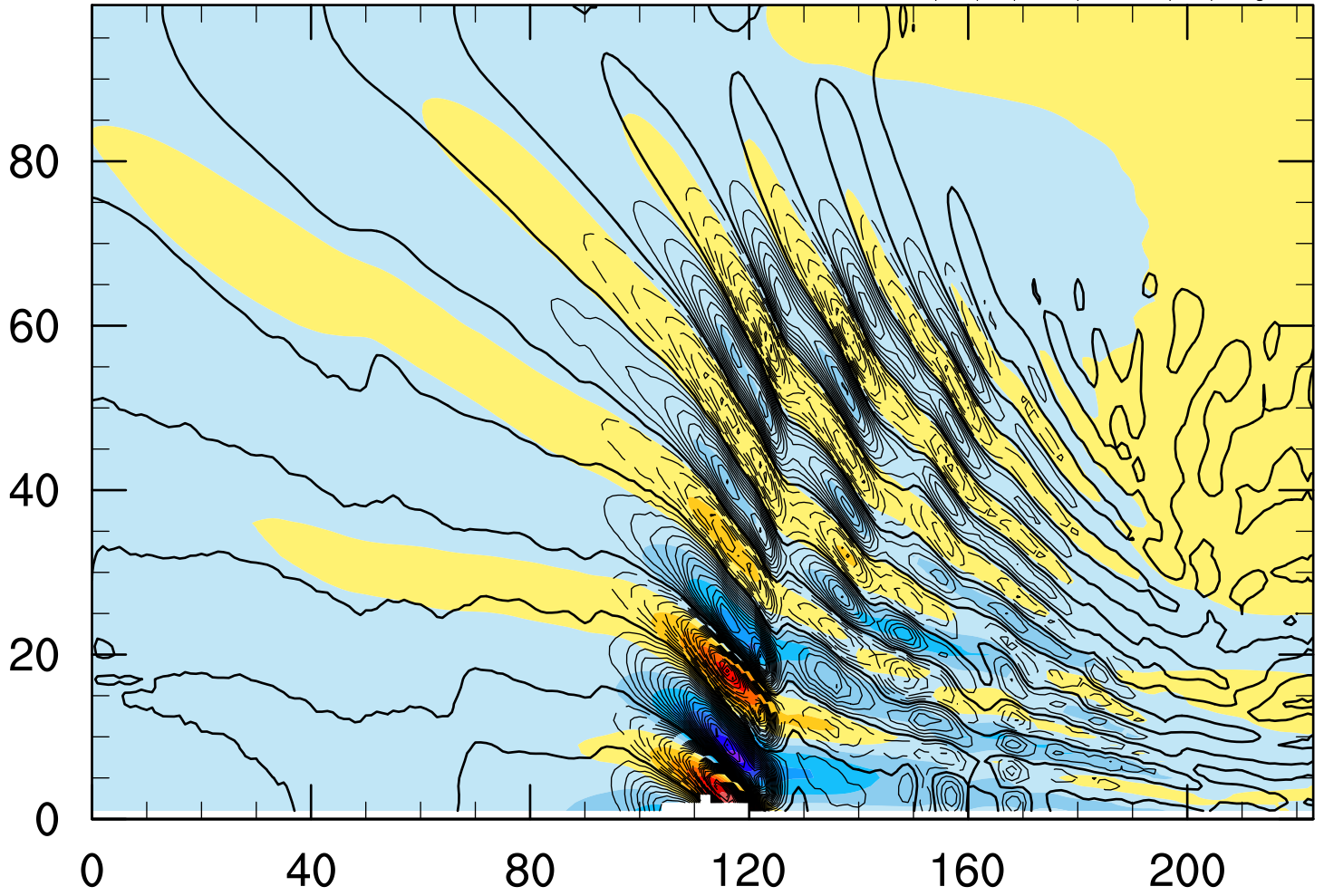


WRF Hill 3D

Valid: 0001-01-01_12:00:00

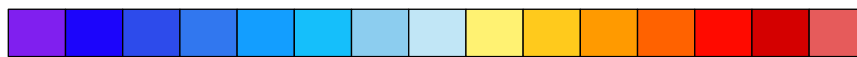
x-wind component
z-wind component (m s-1)

Cross-Section: (1,51) to (224,51) ; center=(0,50) ; angle=90



z-wind component Contours: -.27 to .21 by .01

x-wind component



-7 -6 -5 -4 -3 -2 -1 0 1 2 3 4 5 6